

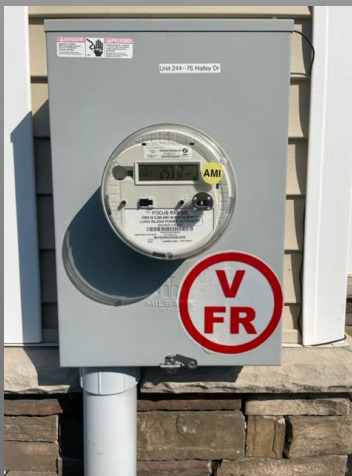
# SCFA - Training Bulletin (22-05)

## TRUSS SIGNS- Identification of buildings utilizing truss type construction

- Required by the Uniform Fire Prevention and Building Code of NYS as of 2005 for new buildings built utilizing truss construction
- Designed to alert Firefighters of truss construction
- Required on commercial buildings, on or within 12 inches of exterior entrance, exit and roof access doors & Fire Department Connections for sprinkler/standpipe
- Required as of 2015 on or near the meter pan on new 1 and 2-family dwellings built utilizing truss construction



- Type I- Fire Resistive
- **Type II – Non-Combustible**
- Type III- Ordinary or Non-fireproof
- Type IV – Heavy Timber or Mill
- **Type V – Wood Frame or Stick**
- R = Roof    F = floor



Visit our website at [www.scfa-li.org](http://www.scfa-li.org)